

# The OPTI Accreditation Process



Joyce L. Obradovic, MA  
Director, Division of Postdoctoral Training

# Accreditation Process Overview

---

- Accreditation - the act of granting official authorization or recognition (especially with respect to an educational entity that maintains suitable standards)

# Accreditation Process Overview

- In order for an entity to flourish, the entity must meet certain challenges, manage its effectiveness, and cost, address various concerns, and to promote and address conditions under which it is appropriate.

# OPTI Accreditation Process

- In July of 1995, the AOA changed its method by which it evaluates and approves its postdoctoral training programs.
- The revised method involves “accreditation” of consortia as “Osteopathic Postdoctoral Training Institutions” OPTIs.

# OPTI Accreditation Process

- Accreditation provides the public, governmental agencies, the osteopathic profession, interns and residents with the following:
  - An assurance that accredited OPTI's have met or exceeded a basic level of quality for OGME.

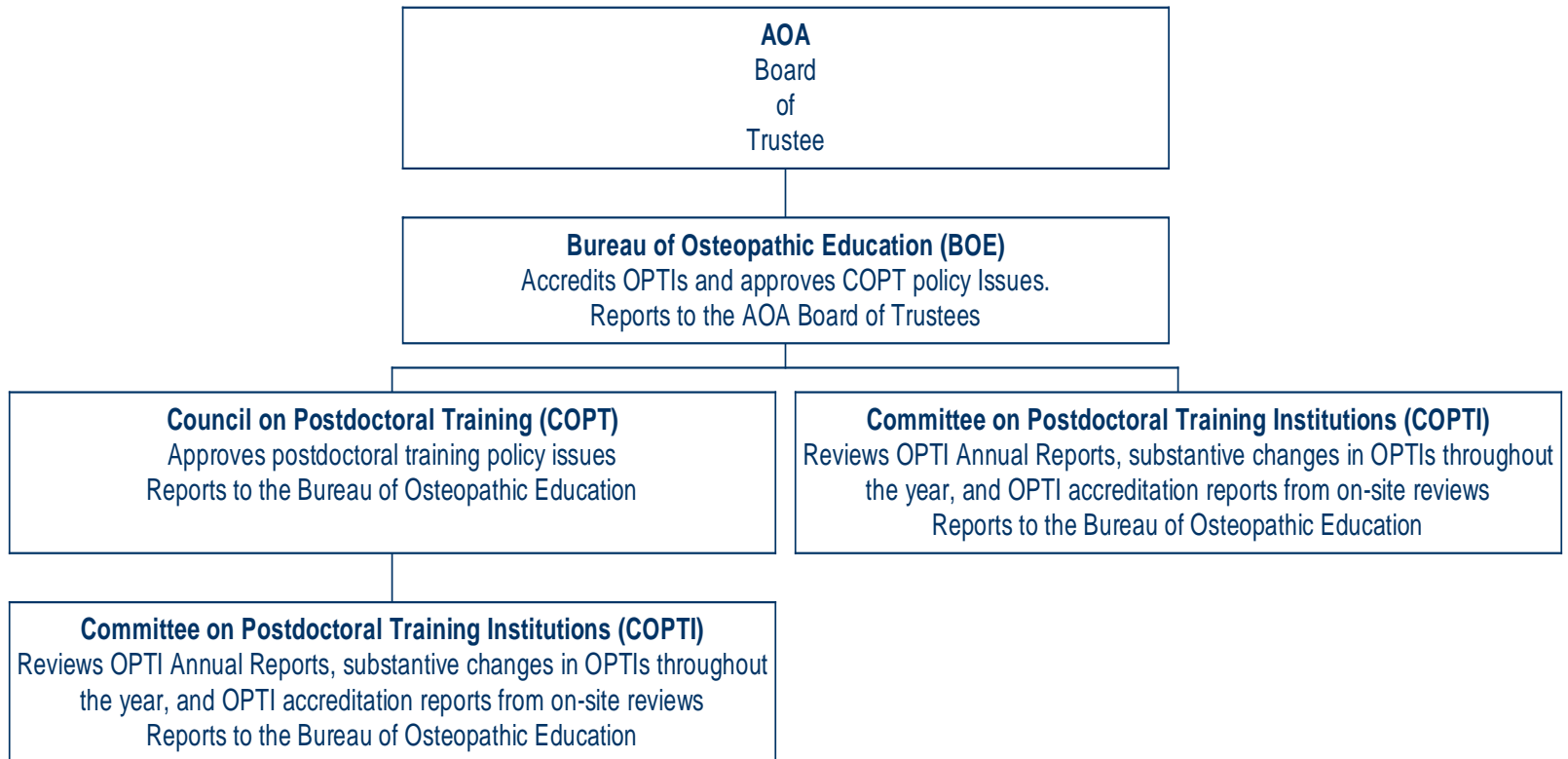
# OPTI Accreditation Process

- **What is involved in the accreditation process?**
  - A self- and peer process of systematic examination and evaluation of all aspects of the educational program, its impact and effectiveness as measured against the OPTI standards.

# OPTI Accreditation Process

- **What benefits are realized from this process?**
  - **An assessment of the OPTI's financial and philosophical ability to provide quality training programs.**
  - **Assurance to interns and residents of entering quality and financially sound osteopathic graduate medical education programs.**

# The Accreditation Process



# How does this happen?

- **OPTIs are notified by the AOA one year in advance when a site review is due.**
- **At that time the OPTI is notified that their self-study is due to the AOA sixty days prior to the site survey.**
- **AOA contacts the OPTI four months prior to the survey to schedule a time and date.**
- **The survey team is selected and the roster is submitted to the OPTI.**
- **The on site review takes place and a report is written.**

# How does this happen?

- A preliminary draft report is prepared and sent to the OPTI and surveyors for initial review and correction of any factual errors.
- The final draft report and any response from the OPTI is placed on the COPTI agenda for review and recommendation.
- COPTI deliberates the site survey report and votes to accept.
- COPTI then votes to approve recommending continuing accreditation with number of years before resurvey.
- Recommendations of COPTI are forwarded to the BOE for final accreditation action.